

# Circular Inline Centrifugal Duct Fans



ISO IEC 80079-34  
QAN-1643



II 2G Ex IIC T3 - T6 Gb / II 2G Ex h IIC T3 - T6 Gb

II 2D Ex tb IIIC T200°C - T85°C Db / II 2D Ex h IIIC T200°C - T85°C Db

II 1G Ex h T5 GA / II 1G Ex h T5 GA

II 1D Ex tb IIIC T200°C - T85°C Db / II 1D Ex h IIIC T200°C - T85°C Db



## RKD Y SERIES

2026



Management  
System

ISO 9001:2015

ID : 01 100 902038

[www.tuv.com](http://www.tuv.com)



### **Compact custom solutions for ducted ventilation systems**

RKD Y series radial duct fans offer solutions capable of reaching high pressures, designed for use in environments where non-extreme corrosive contaminated air and explosive gases are present. Typical Applications: Natural gas ventilation, Processes containing explosive gases, Fume hood cabinets, Petrochemical plants, Water treatment facilities, Printing machines.

- **Impeller** ; Statically and dynamically balanced, High efficiency, Low noise operation. Features an aerofoil backward-curved blade design. Depending on the application, manufactured from Aluminum, Conductive PP, halogen-free – antistatic materials.
- **Casing** ; Made of Aluminum alloy or carbon steel, coated with UV-resistant polyester-based paint. Suitable for operation at any orientation.
- **Fittings** ; All connection bolts are A4/316 stainless steel.
- **Operating range** : Air passing over the motor : **-20 °C to +60 °C** / IP65 Protection
- **Motor** ; High efficiency, totally enclosed motor suitable for S1 continuous duty,
- Inlet and outlet diameters in accordance with DIN standards for easy installation
- Speed control can only be achieved via frequency inverter.

### **Explosion-Proof Models**

All models can be manufactured fully **ATEX certified**.

The impeller is made of antistatic and flame-retardant materials. It does not generate smoke emissions during operation. Suction and discharge connections are provided via ATEX-certified flexible hoses.

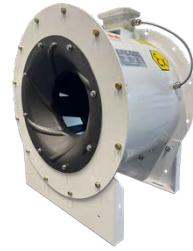
Electrical connection is made through an ATEX-certified On/Off switch.

RKDY series explosion-proof fans provide an ideal solution for harsh industrial environments by combining safety, durability, and energy efficiency.

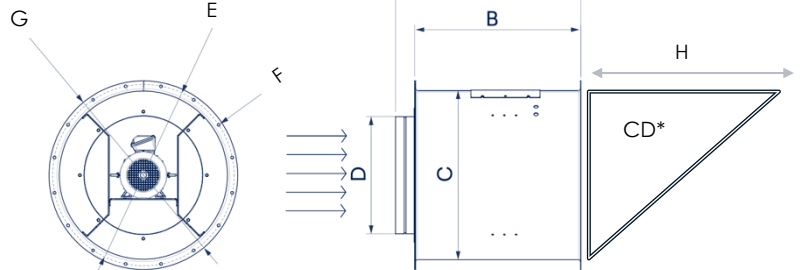
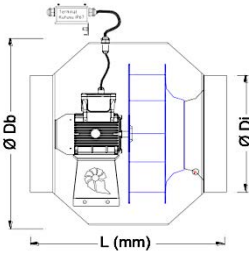




180 – 250mm



280mm – 800mm



TYPE	ØDi	ØDb	L
RKDY 18B	180	350	330
RKDY 20B	200	350	330
RKDY 22B	200	350	330
RKDY 25B	250	400	330

TYPE	ØD	A	B	C	E	F	G	H
RKDY 28B	315	450	400	450	Ø8x10	325	360	300
RKDY 31B	350	550	500	500	Ø8x10	355	395	500
RKDY 35B	400	550	500	560	Ø8x10	400	435	500
RKDY 40B	450	650	600	630	Ø8x10	445	480	500
RKDY 45B	500	650	600	710	Ø8x10	495	530	600
RKDY 50B	560	750	700	800	Ø12x12	560	590	600
RKDY 56B	630	750	700	900	Ø12x12	629	650	600
RKDY 63B	710	850	800	1000	Ø12x14	690	720	800
RKDY 71B	800	950	900	1120	Ø16x14	770	800	800
RKDY 80B	900	1050	1000	1250	Ø16x14	860	890	800



## ACCESORIES



ADV Drive Box



BSEx ATEX On/Off Switch



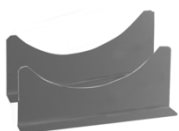
Spring Vibration Damper



Motor Protection Box



Atex Flexible Connector



Floor Mounting Bracket



Duct Connection Flange



Rubber Vibration Damper



Wire-Protected Exhaust Outlet



Duct Reducer

## Models & Performance

				Total Pressure - Pt ( 10Pa – 1mmss)																
Model	Rpm	Kw	dBA	15	20	30	35	40	45	50	60	75	100	125	150	175	200	225	250	
RKDY 18B/6/50	950	0,18	36	300	280	<u>215</u>	<u>170</u>	-												
RKDY 20B/6/50	950	0,18	39	375	350	315	<u>280</u>	<u>225</u>	150											
RKDY 22B/6/50	950	0,18	41		500	475	450	400	<u>350</u>	<u>300</u>										
RKDY 25B/6/50	950	0,18	45		650	645	640	<u>625</u>	<u>600</u>	575										
RKDY 18B/4/50	1450	0,18	47				400	392	385	360	<u>300</u>	<u>270</u>								
RKDY 20B/4/50	1450	0,18	48						550	535	510	<u>475</u>	<u>350</u>							
RKDY 22B/4/50	1450	0,18	50							750	725	700	650	<u>590</u>	<u>500</u>	400	300			
RKDY 28B/6/50	950	0,18	46			1100	1180	1160	1100	1000	<u>850</u>	<u>700</u>	600							
RKDY 31B/6/50	950	0,18	51					1550	1525	1500	1400	<u>1300</u>	<u>1100</u>	950	700					
RKDY 25B/4/50	1450	0,18	56							1125	1115	1090	1040	980	<u>850</u>	<u>700</u>	450			
RKDY 35B/6/50	950	0,25	52							2200	2150	<u>2100</u>	<u>1850</u>	1500	1300					
RKDY 40B/6/50	950	0,25	57									<u>3000</u>	<u>2800</u>	2600	2300	<u>1900</u>	<u>1750</u>			
RKDY 45B/6/50	950	0,37	58										4000	3700	3400	3100	<u>2800</u>	<u>2500</u>	<u>2250</u>	

				Total Pressure - Pt ( 10Pa – 1mmss)																
Model	Rpm	Kw	dBA	100	125	150	175	200	225	250	275	300	325	350	400	450	500	550	600	
RKDY 18B/2/50	2950	0,18	62		800	780	740	710	670	625	600	<u>550</u>	<u>475</u>	400						
RKDY 20B/2/50	2950	0,18	65			1100	1090	1000	975	950	900	850	800	<u>750</u>	<u>650</u>	500				
RKDY 22B/2/50	2950	0,25	69					1500	1490	1475	1465	1450	1400	1325	1200	<u>1140</u>	<u>1050</u>	950		
RKDY 28B/4/50	1450	0,25	60	1600	1500	1300	<u>1200</u>	<u>1100</u>	975	800										
RKDY 31B/4/50	1450	0,25	63	2200	2100	2000	1850	1700	1550	1400	<u>1330</u>	<u>1250</u>								
RKDY 35B/4/50	1450	0,37	63			3400	3300	3050	2700	2600	2500	2400	<u>2200</u>	<u>1950</u>	1550					
RKDY 40B/4/50	1450	0,55	68					4700	4650	4600	4400	4200	4000	3800	3500	<u>3000</u>	<u>2500</u>			
RKDY 45B/4/50	1450	1,10	69					6100	6050	6000	5900	5800	5600	5400	5200	4950	<u>4700</u>	<u>4200</u>	<u>3600</u>	

				Total Pressure - Pt ( 10Pa – 1mmss)																
Model	Rpm	Kw	dBA	250	275	300	325	350	400	450	500	550	600	650	700	750	800	850	900	
RKDY 25B/2/50	2950	0,37	73	2150	2130	2080	2020	1950	1900	1850	1800	1650	<u>1500</u>	<u>1325</u>	1150	980	850			
RKDY 28B/2/50	2850	0,75	74			3200	3100	3000	2900	2800	2700	2600	2500	2300	1800	1750	1700	<u>1500</u>	<u>1400</u>	

				Total Pressure - Pt ( 10Pa – 1mmss)																
Model	Rpm	Kw	dBA	400	500	600	700	800	850	900	1000	1100	1200	1300	1400	1500	1600	1700	1800	
RKDY 31B/2/50	2950	1,10	78	4400	4350	4300	4100	3950	3750	3550	3300	<u>3000</u>	<u>2600</u>	2300	2000					
RKDY 35B/2/50	2950	2,20	85			6850	6800	6700	6400	5900	5700	5600	5300	4900	4500	4000	<u>3600</u>	<u>3300</u>	2600	
RKDY 40B/2/39*	2350	2,20	79			7300	6900	6100	5900	5600	<u>5300</u>	<u>4750</u>	4000	3300						
RKDY 40B/2/44*	2600	3,00	81				8200	7900	7500	7000	6600	6300	6000	5500	<u>5000</u>	<u>4600</u>				
RKDY 45B/4/67*	1950	1,50	74	8000	7800	7250	6800	6100	5900	<u>5200</u>	<u>4500</u>	3700								
RKDY 45B/4/70*	2050	2,20	77		9000	8600	8200	7800	7400	7000	6600	<u>6000</u>	<u>5100</u>							
RKDY 45B/2/40*	2400	4,00	79			10000	9700	9300	9100	9000	8800	8200	7500	7000	<u>6200</u>	<u>5600</u>	<u>4900</u>	4250		

Values with frequency inverter (in Hz)

Sound levels are given excluding +3 tolerance, measured at a distance of 3 meters, for the underlined average most efficient operating range (80% - 89%).

**TECHNICAL INFORMATION**

Models		Voltage	Air Flow	Speed	Motor	Current	Temp.	Weight	Sound
<b>RKDY 18B</b>	Art. Number	Volt	m <sup>3</sup> /h	min <sup>-1</sup>	Kw	Amp	+°C	Kg	dB(A)
RKDY 18B/2/50.T	5182501	400V/50Hz	800	2950	0,18	0,6	60	9	62
RKDY 18B/4/50.T	5184501	400V/50Hz	420	1450	0,18	0,6	60	9	47
RKDY 18B/2/50.M	5182502	230V/50Hz	800	2950	0,18	1,0	60	10	63
RKDY 18B/4/50.M	5184502	230V/50Hz	420	1450	0,18	1,0	60	10	47
RKDY 18B/6/50.T	5186501	400V/50Hz	300	950	0,18	0,8	60	9	36
<b>Exproof / ATEX Version</b>	<b>&gt;&gt; Gas / Ex II 2G h T4 IP65 - (Gas) - Zone1/2</b>	<b>&gt;&gt;Dust / Ex II 2D tb IIIC T135° Db (IP65) – Zone1/2</b>							
RKDY 18B/2/50.Ex	5182503	400V/50Hz	800	2950	0,18	0,6	60	10	62
RKDY 18B/4/50.Ex	5184503	400V/50Hz	420	1450	0,18	0,6	60	10	47
RKDY 18B/2/50.Ex M	5182504	230V/50Hz	800	2950	0,18	1,00	60	11	63
RKDY 18B/4/50.Ex.M	5184504	230V/50Hz	420	1450	0,18	1,00	60	11	47
RKDY 18B/6/50.Ex	5186503	400V/50Hz	300	950	0,18	0,8	60	11	36

Models		Voltage	Air Flow	Speed	Motor	Current	Temp.	Weight	Sound
<b>RKDY 20B</b>	Art. Number	V	m <sup>3</sup> /h	min <sup>-1</sup>	Kw	Amp	+°C	Kg	dB(A)
RKDY 20B/2/50.T	5202501	400V/50Hz	1150	2950	0,18	0,6	60	9	65
RKDY 20B/4/50.T	5204501	400V/50Hz	590	1450	0,18	0,6	60	9	48
RKDY 20B/2/50.M	5202502	230V/50Hz	1150	2950	0,18	1,0	60	10	65
RKDY 20B/4/50.M	5204502	230V/50Hz	590	1450	0,18	1,0	60	10	48
RKDY 20B/6/50.T	5206501	400V/50Hz	375	950	0,18	0,8	60	9	39
<b>Exproof / ATEX Version</b>	<b>&gt;&gt; Gas / Ex II 2G h T4 IP65 - (Gas) - Zone1/2</b>	<b>&gt;&gt;Dust / Ex II 2D tb IIIC T135° Db (IP65) – Zone1/2</b>							
RKDY 20B/2/50.Ex	5202503	400V/50Hz	1150	2950	0,18	0,6	60	10	65
RKDY 20B/4/50.Ex	5204503	400V/50Hz	590	1450	0,18	0,6	60	10	48
RKDY 20B/2/50.Ex M	5202504	230V/50Hz	1150	2950	0,18	1,00	60	11	65
RKDY 20B/4/50.Ex.M	5204504	230V/50Hz	590	1450	0,18	1,00	60	11	48
RKDY 20B/6/50.Ex	5206503	400V/50Hz	375	950	0,18	0,8	60	11	39

Models		Voltage	Air Flow	Speed	Motor	Current	Temp.	Weight	Sound
<b>RKDY 22B</b>	Art. Number	V	m <sup>3</sup> /h	min <sup>-1</sup>	Kw	Amp	+°C	Kg	dB(A)
RKDY 22B/2/50.T	5222501	400V/50Hz	1500	2950	0,25	0,7	70	10	65
RKDY 22B/4/50.T	5224501	400V/50Hz	750	1450	0,18	0,6	70	10	53
RKDY 22B/2/50.M	5222502	400V/50Hz	1500	2950	0,25	1,3	70	11	65
RKDY 22B/4/50.M	5224502	230V/50Hz	750	1450	0,18	0,8	70	11	53
RKDY 22B/6/50.T	5226501	400V/50Hz	500	950	0,18	0,6	70	11	65
<b>Exproof / ATEX Version</b>	<b>&gt;&gt; Gas / Ex II 2G h T4 IP65 - (Gas) - Zone1/2</b>	<b>&gt;&gt;Dust / Ex II 2D tb IIIC T135° Db (IP65) – Zone1/2</b>							
RKDY 22B/2/50.Ex	5222503	400V/50Hz	1500	2950	0,25	0,7	60	11	65
RKDY 22B/4/50.Ex	5224503	400V/50Hz	750	1450	0,18	0,6	60	11	53
RKDY 22B/2/50.Ex M	5222504	230V/50Hz	1500	2950	0,25	1,3	60	13	65
RKDY 22B/4/50.Ex.M	5224504	230V/50Hz	750	1450	0,25	1,3	60	13	53
RKDY 22B/6/50.Ex	5226503	400V/50Hz	500	950	0,18	0,7	60	13	65

Models		Voltage	Air Flow	Speed	Motor	Current	Temp.	Weight	Sound
<b>RKDY 25B</b>	Art. Number	V	m <sup>3</sup> /h	min <sup>-1</sup>	Kw	Amp	+°C	Kg	dB(A)
RKDY 25B/2/50.T	5252501	400V/50Hz	2150	2950	0,37	1,10	60	11	73
RKDY 25B/4/50.T	5254501	400V/50Hz	1125	1450	0,18	0,60	60	11	56
RKDY 25B/2/50.M	5252502	230V/50Hz	2150	2950	0,37	1,70	60	12	73
RKDY 25B/4/50.M	5254502	230V/50Hz	1125	1450	0,25	1,20	60	12	56
RKDY 25B/6/50.T	5256501	400V/50Hz	650	950	0,18	0,60	60	12	45
<b>Exproof / ATEX Version</b>	<b>&gt;&gt; Gas / Ex II 2G h T4 IP65 - (Gas) - Zone1/2</b>	<b>&gt;&gt;Dust / Ex II 2D tb IIIC T135° Db (IP65) – Zone1/2</b>							
RKDY 25B/2/50.Ex	5252503	400V/50Hz	2150	2950	0,37	1,30	60	12	73
RKDY 25B/4/50.Ex	5254503	400V/50Hz	1125	1450	0,18	0,60	60	12	56
RKDY 25B/2/50.Ex.M	5252504	230V/50Hz	2150	2950	0,37	1,70	60	13	73
RKDY 25B/4/50.Ex.M	5254504	230V/50Hz	1125	1450	0,25	1,20	60	13	56
RKDY 25B/6/50.Ex	5256504	400V/50Hz	650	950	0,18	0,60	60	12	45

Models		Voltage	Air Flow	Speed	Motor	Current	Temp.	Weight	Sound
<b>RKDY 28B</b>	Art. Number	V	m <sup>3</sup> /h	min <sup>-1</sup>	Kw	Amp	+°C	Kg	dB(A)
RKDY 28B/2/50.T	5282501	400V/50Hz	3200	2950	0,75	1,90	60	25	76
RKDY 28B/4/50.T	5284501	400V/50Hz	1600	1450	0,18	0,60	60	43	60
RKDY 28B/2/50.M	5282502	230V/50Hz	3200	2950	0,75	3,50	60	25	76
RKDY 28B/4/50.M	5284502	230V/50Hz	1600	1450	0,25	1,20	60	23	61
RKDY 28B/6/50.T	5286501	400V/50Hz	1000	950	0,18	0,60	60	20	46
<b>Exproof / ATEX Version</b>	<b>&gt;&gt; Gas / Ex II 2G h T4 IP65 - (Gas) - Zone1/2</b>	<b>&gt;&gt;Dust / Ex II 2D tb IIIC T135° Db (IP65) – Zone1/2</b>							
RKDY 28B/2/50.Ex	5282503	400V/50Hz	3200	2950	0,75	1,90	60	27	76
RKDY 28B/4/50.Ex	5284503	400V/50Hz	1600	1450	0,25	0,80	60	25	61
<b>RKDY 28B/2/50.Ex.M</b>	<b>5282504</b>	<b>230V/50Hz</b>	<b>3200</b>	<b>2950</b>	<b>0,75</b>	<b>3,50</b>	<b>60</b>	<b>29</b>	<b>76</b>
RKDY 28B/4/50.Ex.M	5284504	230V/50Hz	1600	1450	0,25	1,20	60	27	62
RKDY 28B/6/50.Ex	5286503	400V/50Hz	1000	950	0,18	0,60	60	24	46

Values with frequency inverter (in Hz)

Sound levels are given excluding +3 tolerance, measured at a distance of 3 meters, for the underlined average most efficient operating range (80% - 89%).

**TECHNICAL INFORMATIONS**

Models		Voltage	Air Flow	Speed	Motor	Current	Temp.	Weight	Sound
<b>RKDY 31B</b>	Art. Number	Volt	m <sup>3</sup> /h	min <sup>-1</sup>	Kw	Amp	+°C	Kg	dB(A)
RKDY 31B/2/50.T	5312501	400V/50Hz	4400	2950	1,50	3,00	60	35	78
RKDY 31B/4/50.T	5314501	400V/50Hz	2200	1450	0,25	0,80	60	32	63
RKDY 31B/2/50.M	5312502	230V/50Hz	4400	2950	1,50	5,00	60	32	79
RKDY 31B/4/50.M	5314502	230V/50Hz	2200	1450	0,25	1,20	60	35	64
RKDY 31B/6/50.T	5316501	400V/50Hz	1400	950	0,18	0,60	60	33	51

<b>Exproof / Atex Version</b>	>> Gas / Ex II 2G h T4 IP65 - (Gas) - Zone1/2	>>Dust / Ex II 2D tb IIIC T135° Db (IP65) – Zone1/2
RKDY 31B/2/50.Ex	5312503	400V/50Hz 4400 2950 1,50 3,00 60 35 78
RKDY 31B/4/50.Ex	5314503	400V/50Hz 2200 1450 0,25 0,80 60 32 64
RKDY 31B/2/50.Ex.M*	5312504	230V/50Hz 4400 2950 1,50 5,00 60 32 79
RKDY 31B/4/50.Ex.M	5314504	230V/50Hz 2200 1450 0,25 1,20 60 35 64
RKDY 31B/6/50.Ex	5316504	400V/50Hz 1400 950 0,18 0,80 60 33 51

Models		Voltage	Air Flow	Speed	Motor	Current	Temp.	Weight	Sound
<b>RKDY 35B</b>	Art. Number	Volt	m <sup>3</sup> /h	min <sup>-1</sup>	Kw	Amp	+°C	Kg	dB(A)
RKDY 35B/2/50.T	5352501	400V/50Hz	6800	2950	2,20	4,80	60	45	78
RKDY 35B/4/50.T	5354501	400V/50Hz	3400	1450	0,37	0,50	60	40	63
RKDY 35B/2/50.M	5352502	230V/50Hz	6800	2950	2,20	9,00	60	45	79
RKDY 35B/4/50.M	5354502	230V/50Hz	3400	1450	0,37	1,70	60	40	64
RKDY 35B/6/50.T	5356501	400V/50Hz	2200	950	0,18	0,40	60	39	52

<b>Exproof / Atex Version</b>	>> Gas / Ex II 2G h T4 IP65 - (Gas) - Zone1/2	>>Dust / Ex II 2D tb IIIC T135° Db (IP65) – Zone1/2
RKDY 35B/2/50.Ex	5352503	400V/50Hz 6800 2950 2,20 1,65 60 48 78
RKDY 35B/4/50.Ex	5354503	400V/50Hz 3400 1450 0,37 0,50 60 45 64
RKDY 35B/2/50.Ex.M*	5352504	230V/50Hz 6800 2950 2,20 9,00 60 48 79
RKDY 35B/4/50.Ex.M	5354504	230V/50Hz 3400 1450 0,37 0,170 60 45 64
RKDY 35B/6/50.Ex	5356503	400V/50Hz 2200 950 0,18 1,65 60 41 52

Models		Voltage	Air Flow	Speed	Motor	Current	Temp.	Weight	Sound
<b>RKDY 40B</b>	Art. Number	Volt	m <sup>3</sup> /h	min <sup>-1</sup>	Kw	Amp	+°C	Kg	dB(A)
RKDY 40B/2/44.T *	5402441	400V/44HZ	8200	2600	4,00	8,40	60	67	81
RKDY 40B/2/39.T *	5402391	400V/39HZ	7300	2350	2,20	4,80	60	63	79
RKDY 40B/4/50.T	5404501	400V/50Hz	4700	1450	0,55	1,10	60	58	68
RKDY 40B/6/50.T	5406501	400V/50Hz	3000	950	0,25	0,50	60	56	57
RKDY 40B/4/50.M	5404502	230V/50Hz	4700	1450	0,55	2,50	60	58	69
RKDY 40B/6/50.M*	5406501	400V/50Hz	3000	950	0,25	1,70	60	56	58

<b>Exproof / Atex Version</b>	>> Gas / Ex II 2G h T4 IP65 - (Gas) - Zone1/2	>>Dust / Ex II 2D tb IIIC T135° Db (IP65) – Zone1/2
RKDY 40B/2/44.Ex *	5402443	400V/44HZ 8200 2600 4,00 8,40 60 70 81
RKDY 40B/2/39.Ex *	5402393	400V/39HZ 7300 2350 2,20 4,80 60 66 79
RKDY 40B/4/50.Ex	5404503	400V/50Hz 4700 1450 0,55 1,10 60 61 68
RKDY 40B/6/50.Ex	5406503	400V/50Hz 3000 950 0,25 0,50 60 59 57
RKDY 40B/4/50.Ex.M	5404504	230V/50Hz 4700 1450 0,55 2,50 60 61 69
RKDY 40B/6/50.Ex.M*	5406504	230V/50Hz 3000 950 0,37 2,00 60 59 58

Models		Voltage	Air Flow	Speed	Motor	Current	Temp.	Weight	Sound
<b>RKDY 45B</b>	Art. Number	Volt	m <sup>3</sup> /h	min <sup>-1</sup>	Kw	Amp	+°C	Kg	dB(A)
RKDY 45B/2/40.T *	5452401	400V/40Hz	10.000	2400	4,00	6,40	60	85	79
RKDY 45B/4/70.T *	5454701	400V/74Hz	9000	2150	2,20	4,80	60	81	77
RKDY 45B/4/57.T *	5454571	400V/57Hz	8000	1950	1,50	3,50	60	79	74
RKDY 45B/4/50.T	5454501	400V/50Hz	6100	1450	1,10	2,80	60	79	69
RKDY 45B/6/50.T	5456501	400V/50Hz	4000	950	0,37	1,35	60	76	58
RKDY 45B/4/50.M	5454502	230V/50Hz	6100	1450	1,10	5,20	60	79	69
RKDY 45B/6/50.M*	5456501	400V/50Hz	4000	950	0,37	1,80	60	76	58

<b>Exproof / Atex Version</b>	>> Gas / Ex II 2G h T4 IP65 - (Gas) - Zone1/2	>>Dust / Ex II 2D tb IIIC T135° Db (IP65) – Zone1/2
RKDY 45B/2/40.Ex *	5452403	400V/40Hz 10.000 2400 4,00 6,40 60 85 79
RKDY 45B/4/70.Ex *	5454703	400V/74Hz 9000 2150 2,20 4,80 60 81 77
RKDY 45B/4/57.Ex *	5454573	400V/57Hz 8000 1950 1,50 3,50 60 79 74
RKDY 45B/4/50.Ex	5454503	400V/50Hz 6100 1450 1,10 2,80 60 79 69
RKDY 45B/6/50.Ex	5456503	400V/50Hz 4000 950 0,37 1,35 60 76 58
RKDY 45B/4/50.Ex.M	5454504	230V/50Hz 6100 1450 1,10 5,00 60 79 70
RKDY 45B/6/50.Ex.M	5456504	230V/50Hz 4000 950 0,37 2,50 60 76 59

Values with frequency inverter (in Hz)

Sound levels are given excluding +3 tolerance, measured at a distance of 3 meters, for the underlined average most efficient operating range (80% - 89%).